

# Space Availability with Photo Report



## 325 N Ash St - The Collab

Office - Chandler Submarket  
Gilbert, AZ 85233



41,245  
SF RBA

0.57  
AC Lot

2020  
Built

7,713  
Max Contig SF

800 - 13,589  
Available SF

\$36.50  
Asking Office Rent

### AVAILABLE SPACES

| Floor | Suite | Address      | Use    | Type   | SF Avail-able | Flr Contig | Bldg Contig | Rent       | Status    | Occupancy | Term       | Listing Com-pany     |
|-------|-------|--------------|--------|--------|---------------|------------|-------------|------------|-----------|-----------|------------|----------------------|
| P 1st |       | 325 N Ash St | Retail | Direct | 800 - 7,713   | 7,713      | 7,713       | Withheld   | Available | Vacant    | Negotiable | OX Urban Proper-ties |
| P 2nd | A     | 325 N Ash St | Office | Direct | 5,876         | 5,876      | 5,876       | \$36.50/FS | Available | Vacant    | Negotiable | Cushman & Wakefield  |

### AMENITIES

- 24 Hour Access
- Balcony
- Restaurant
- Air Conditioning
- High Ceilings

# Space Availability with Photo Report



## 459 N Gilbert Rd - Gilbert Commerce Center - Bldg A

Gilbert Commerce Center  
Office - Chandler Submarket  
Gilbert, AZ 85234



29,749  
SF RBA

1.92  
AC Lot

1986  
Built

2,238  
Max Contig SF

850 - 4,260  
Available SF

\$18.95  
Asking Office Rent

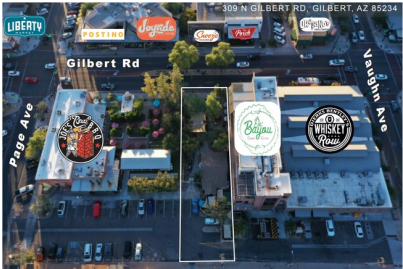
### AVAILABLE SPACES

| Floor | Suite | Address          | Use    | Type   | SF Avail-able | Flr Contig | Bldg Contig | Rent       | Status    | Occupancy | Term       | Listing Com-pany            |
|-------|-------|------------------|--------|--------|---------------|------------|-------------|------------|-----------|-----------|------------|-----------------------------|
| P 1st | A-145 | 459 N Gilbert Rd | Office | Direct | 2,238         | 2,238      | 2,238       | \$18.95/FS | Available | Vacant    | Negotiable | Commercial Properties, Inc. |
| P 1st | A-290 | 459 N Gilbert Rd | Office | Direct | 850           | 850        | 850         | Withheld   | Available | Vacant    | Negotiable | Commercial Properties, Inc. |
| P 2nd | A-210 | 459 N Gilbert Rd | Office | Direct | 1,172         | 1,172      | 1,172       | \$18.95/FS | Available | Oct 2022  | Negotiable | Commercial Properties, Inc. |

### BUILDING NOTES

The Gilbert Commerce Center is composed of three buildings. Located in the Town of Gilbert, the #1 city in Arizona for business expansion. (Expansion Magazine) Less than two miles south of the Superstition Freeway (Rt. 60) and situated on 8.3 acres in a park-like setting. Excellent residential/commercial growth area.

# Space Availability with Photo Report



**309 N Gilbert Rd**  
Land - Chandler Submarket  
Gilbert, AZ 85234

0.2  
AC Lot



## AVAILABLE SPACES

No Spaces Available.

# Space Availability with Photo Report



## SWC Gilbert Rd & Juniper Ave

Restaurant - Gilbert Submarket  
Gilbert, AZ 85234



40,000  
SF GLA

2022  
Built

15,800  
Max Contig SF

800 - 38,600  
Available SF

### AVAILABLE SPACES

| Floor | Suite         | Address                      | Use    | Type   | SF Available   | Flr Contig | Bldg Contig | Rent     | Status    | Occupancy | Term       | Listing Company     |
|-------|---------------|------------------------------|--------|--------|----------------|------------|-------------|----------|-----------|-----------|------------|---------------------|
| P 1st | A             | SWC Gilbert Rd & Juniper Ave | Retail | Direct | 3,500 - 15,800 | 15,800     | 15,800      | Withheld | Available | Vacant    | Negotiable | OX Urban Properties |
| P 1st | Office/Retail | SWC Gilbert Rd & Juniper Ave | Retail | Direct | 800 - 10,000   | 10,000     | 10,000      | Withheld | Available | Vacant    | Negotiable | OX Urban Properties |
| P 1st | B             | SWC Gilbert Rd & Juniper Ave | Retail | Direct | 2,000 - 6,500  | 6,500      | 6,500       | Withheld | Available | Vacant    | Negotiable | OX Urban Properties |
| P 1st | C             | SWC Gilbert Rd & Juniper Ave | Retail | Direct | 6,300          | 6,300      | 6,300       | Withheld | Available | Vacant    | Negotiable | OX Urban Properties |

### AMENITIES

- Bus Line
- Restaurant
- Monument Signage



## Space Availability with Photo Report



**313 N Gilbert Rd**  
Restaurant - Gilbert Submarket  
Gilbert, AZ 85234



**15,000**  
SF GLA

**0.2**  
AC Lot

**2017**  
Built

**64**  
Max Contig SF

**25 - 64**  
Available SF

**\$48 - 59**  
CoStar Est. Retail Rent

### AVAILABLE SPACES

| Floor | Suite | Address          | Use    | Type      | SF Avail-able | Flr Contig | Bldg Contig | Rent     | Status    | Occupancy | Term | Listing Com-pany           |
|-------|-------|------------------|--------|-----------|---------------|------------|-------------|----------|-----------|-----------|------|----------------------------|
| P 3rd | 300   | 313 N Gilbert Rd | Office | Coworking | 25 - 64       | 64         | 64          | Withheld | Available | TBD       |      | Thrive Coworking for Women |

# Space Availability with Photo Report



## 459 N Gilbert Rd - Gilbert Commerce Center - Bldg C

Gilbert Commerce Center  
Office - Chandler Submarket  
Gilbert, AZ 85234



26,237  
SF RBA

2.75  
AC Lot

1986  
Built

3,082  
Max Contig SF

2,600 - 5,682  
Available SF

\$18.95  
Asking Office Rent

### AVAILABLE SPACES

| Floor | Suite | Address          | Use    | Type   | SF Available | Flr Contig | Bldg Contig | Rent       | Status    | Occupancy | Term       | Listing Company             |
|-------|-------|------------------|--------|--------|--------------|------------|-------------|------------|-----------|-----------|------------|-----------------------------|
| P 1st | C-110 | 459 N Gilbert Rd | Office | Direct | 2,600        | 2,600      | 2,600       | \$18.95/FS | Available | Vacant    | Negotiable | Commercial Properties, Inc. |
| P 2nd | C-210 | 459 N Gilbert Rd | Office | Direct | 3,082        | 3,082      | 3,082       | \$18.95/FS | Available | Vacant    | Negotiable | Commercial Properties, Inc. |

### BUILDING NOTES

The Gilbert Commerce Center is composed of three buildings. Located in the Town of Gilbert, the #1 city in Arizona for business expansion. (Expansion Magazine) Less than two miles south of the Superstition Freeway (Rt. 60) and situated on 8.3 acres in a park-like setting. Excellent residential/commercial growth area.

# Space Availability with Photo Report



## SWC of Gilbert Rd & Juniper Ave - Heritage Park

Office - Chandler Submarket  
Gilbert, AZ 85234



140,000  
SF RBA

9.1  
AC Lot

2023  
Built

154,000  
Max Contig SF

30,800 - 154,000  
Available SF

\$37.50  
Asking Office Rent

### AVAILABLE SPACES

| Floor | Suite | Address                               | Use    | Type   | SF Avail-able | Flr Contig | Bldg Contig | Rent       | Status    | Occupancy | Term       | Listing Com-pany |
|-------|-------|---------------------------------------|--------|--------|---------------|------------|-------------|------------|-----------|-----------|------------|------------------|
| P 1st |       | SWC of Gilbert Rd &Office Juniper Ave | Office | Direct | 30,800        | 30,800     | 154,000     | \$37.50/FS | Available | Mar 2023  | Negotiable | CBRE             |
| P 2nd |       | SWC of Gilbert Rd &Office Juniper Ave | Office | Direct | 30,800        | 30,800     | 154,000     | \$37.50/FS | Available | Mar 2023  | Negotiable | CBRE             |
| P 3rd |       | SWC of Gilbert Rd &Office Juniper Ave | Office | Direct | 30,800        | 30,800     | 154,000     | \$37.50/FS | Available | Mar 2023  | Negotiable | CBRE             |
| P 4th |       | SWC of Gilbert Rd &Office Juniper Ave | Office | Direct | 30,800        | 30,800     | 154,000     | \$37.50/FS | Available | Mar 2023  | Negotiable | CBRE             |
| P 5th |       | SWC of Gilbert Rd &Office Juniper Ave | Office | Direct | 30,800        | 30,800     | 154,000     | \$37.50/FS | Available | Mar 2023  | Negotiable | CBRE             |

# Space Availability with Photo Report



## 50 W Vaughn Ave - Phase II Bldg 5

Heritage Marketplace

Storefront Retail/Office (Neighborhood Center) - Gilbert Submarket

Gilbert, AZ 85234



24,284  
SF GLA

2016  
Built

2,638  
Max Contig SF

2,638  
Available SF

\$35.00  
Asking Office Rent

### AVAILABLE SPACES

| Floor | Suite | Address         | Use    | Type   | SF Avail-able | Flr Contig | Bldg Contig | Rent       | Status    | Occupancy | Term       | Listing Com-pany    |
|-------|-------|-----------------|--------|--------|---------------|------------|-------------|------------|-----------|-----------|------------|---------------------|
| P 2nd | 201   | 50 W Vaughn Ave | Office | Direct | 2,638         | 2,638      | 2,638       | \$35.00/FS | Available | Vacant    | Negotiable | Cushman & Wakefield |

### AMENITIES

- Signalized Intersection

### BUILDING NOTES

Heritage Marketplace is located in the Heritage District of Gilbert Approximately 60,800 square feet of total buildings, situated on 3.93 acres. Prime retail space fronting Gilbert Road will be approximately 12,000 for select retail and restaurant operators.

Heritage Marketplace is a uniquely placed family friendly, pedestrian oriented mixed-use development conveniently located on Gilbert Road, north of Elliot Road, and 2 miles south of US 60 Superstition Freeway.

## Space Availability with Photo Report



**134 W Cullumber Ave**  
Land - Chandler Submarket  
Gilbert, AZ 85233

**7.55**  
AC Lot



### AVAILABLE SPACES

---

No Spaces Available.

# Space Availability with Photo Report



**134 W Cullumber Ave**  
Freestanding Retail - Gilbert Submarket  
Gilbert, AZ 85233



|        |        |       |
|--------|--------|-------|
| 4,730  | 5      | 1951  |
| SF GLA | AC Lot | Built |

## AVAILABLE SPACES

---

No Spaces Available.

# Space Availability with Photo Report



## 170 W Cullumber Ave - The District Lofts

Apartments - Downtown Gilbert Submarket  
Gilbert, AZ 85233



238,947  
SF GBA

7.54  
AC Lot

2017  
Built

### AVAILABLE SPACES

No Spaces Available.

### AMENITIES

#### Unit Amenities

- Air Conditioning
- Ceiling Fans
- Granite Countertops
- Island Kitchen
- Loft Layout
- Oven
- Range
- Stainless Steel Appliances
- Vinyl Flooring
- Washer/Dryer
- Balcony
- Garden
- Heating
- Kitchen
- Microwave
- Patio
- Refrigerator
- Tub/Shower
- Walk-In Closets
- Wheelchair Accessible (Rooms)

#### Site Amenities

- Bicycle Storage
- Community-Wide WiFi
- Gated
- Lounge
- Pet Play Area
- Pool
- Public Transportation
- Walking/Biking Trails
- Clubhouse
- Fitness Center
- Grill
- Online Services
- Playground
- Property Manager on Site
- Spa

### BUILDING NOTES

The bed-bath mix, unit counts and sizes are confirmed per property management.

The District Loft Consist of 172 units. The initial phase of 116 units was delivered in Oct ,2017.  
The final phase of 56 units was delivered in Jan ,2018.

# Space Availability with Photo Report



**217-221 N Elm St - Eldorado Apartments**  
Apartments - Downtown Gilbert Submarket  
Gilbert, AZ 85234



|        |        |       |
|--------|--------|-------|
| 9,360  | 0.39   | 1963  |
| SF GBA | AC Lot | Built |

## AVAILABLE SPACES

No Spaces Available.

## BUILDING NOTES

Property Description: 2 FOURPLEXES

Apartment Unit: ATOS



# Space Availability with Photo Report



**405 N Gilbert Dr - Gilbert Road Self Storage**  
Self-Storage - Chandler Submarket  
Gilbert, AZ 85234



|        |        |       |
|--------|--------|-------|
| 69,385 | 3.96   | 1985  |
| SF GBA | AC Lot | Built |

## AVAILABLE SPACES

No Spaces Available.

## BUILDING NOTES

Total Units = 626  
This is a public storage warehouse.

# Space Availability with Photo Report



**20 N Gilbert Rd**  
Freestanding Retail - Gilbert Submarket  
Gilbert, AZ 85234



|        |        |       |
|--------|--------|-------|
| 2,000  | 0.07   | 1980  |
| SF GLA | AC Lot | Built |

## AVAILABLE SPACES

No Spaces Available.

## BUILDING NOTES

There are two apartment units in the back of this property.

# Space Availability with Photo Report



**32 N Gilbert Rd**  
Freestanding Retail - Gilbert Submarket  
Gilbert, AZ 85234



|        |        |       |
|--------|--------|-------|
| 2,500  | 0.15   | 1950  |
| SF GLA | AC Lot | Built |

## AVAILABLE SPACES

No Spaces Available.

## AMENITIES

- Signage

# Space Availability with Photo Report



**100 N Gilbert Rd**  
Restaurant - Gilbert Submarket  
Gilbert, AZ 85234



|              |             |             |
|--------------|-------------|-------------|
| <b>7,545</b> | <b>0.28</b> | <b>2017</b> |
| SF GLA       | AC Lot      | Built       |

## AVAILABLE SPACES

No Spaces Available.

## AMENITIES

- |  |   |
|--|---|
| <ul style="list-style-type: none"><li>Air Conditioning</li></ul> | <ul style="list-style-type: none"><li>Security System</li></ul> |
|--|---|

# Space Availability with Photo Report



**141 N Gilbert Rd**  
Auto Repair - Gilbert Submarket  
Gilbert, AZ 85234



|        |        |       |
|--------|--------|-------|
| 4,500  | 0.41   | 1933  |
| SF GLA | AC Lot | Built |

## AVAILABLE SPACES

No Spaces Available.

# Space Availability with Photo Report



**207 N Gilbert Rd - Heritage Court of Gilbert**  
NEC Gilbert Rd & Cullumber Ave  
Office Condo  
Gilbert, AZ 85234



|        |        |       |
|--------|--------|-------|
| 30,000 | 0.73   | 2000  |
| SF RBA | AC Lot | Built |

## AVAILABLE SPACES

No Spaces Available.

## AMENITIES

- |  |   |
|--|---|
| <ul style="list-style-type: none"><li>• Atrium</li><li>• Courtyard</li><li>• Food Service</li><li>• Restaurant</li></ul> | <ul style="list-style-type: none"><li>• Balcony</li><li>• Food Court</li><li>• Property Manager on Site</li></ul> |
|--|---|

## BUILDING NOTES

Heritage Court is an award winning building constructed in 2000. This is a pride of ownership mixed use project. Multiple uses are all preapproved with exceptional parking provided by the city. This is a divisible building in a high exposure location. There is no deferred maintenance. This building has a stable rental history and is in a strong growth area. Located in Gilbert, AZ, which is the fastest growing city in the USA. The traffic count is over 30,000 cars per day. There are over 300,000 residents within a five mile radius. The building is of extremely high quality construction and design. Approximate net annual income is \$510,000. It has a state of the art phone and Internet system which serves the building and is available by separate sale. This building has a basement level-restaurant & office/retail space. There is street level-retail space and upper level-executive office space. Condos also available for sale for \$160-220/SF depending on the unit.

# Space Availability with Photo Report



**211 N Gilbert Rd - Champions Sports Saloon**  
Bar/Nightclub - Gilbert Submarket  
Gilbert, AZ 85234



|        |        |               |
|--------|--------|---------------|
| 2,136  | 0.12   | 1937 / 2002   |
| SF GLA | AC Lot | Built / Renov |

## AVAILABLE SPACES

No Spaces Available.

## BUILDING NOTES

In old town Gilbert.  
Parking is restricted to the street with limited parking around the block

# Space Availability with Photo Report



**213 N Gilbert Rd - Functional Fitness**  
Health Club - Gilbert Submarket  
Gilbert, AZ 85234



**1,730**  
SF GLA

## AVAILABLE SPACES

---

No Spaces Available.



# Space Availability with Photo Report



**216 N Gilbert Rd - Norwood Furniture**  
Freestanding Retail - Gilbert Submarket  
Gilbert, AZ 85234



|        |        |       |
|--------|--------|-------|
| 27,311 | 1.41   | 1995  |
| SF GLA | AC Lot | Built |

## AVAILABLE SPACES

No Spaces Available.

# Space Availability with Photo Report



**219 N Gilbert Rd**  
Restaurant - Gilbert Submarket  
Gilbert, AZ 85234



1,412  
SF GLA

## AVAILABLE SPACES

No Spaces Available.

# Space Availability with Photo Report



**221 N Gilbert Rd**  
Storefront Retail - Gilbert Submarket  
Gilbert, AZ 85234

1,151  
SF GLA



## AVAILABLE SPACES

---

No Spaces Available.

# Space Availability with Photo Report



**222 N Gilbert Rd**  
Office - Chandler Submarket  
Gilbert, AZ 85234



**16,944**      **2022**  
SF RBA      Built

## AVAILABLE SPACES

---

No Spaces Available.

# Space Availability with Photo Report



**223 N Gilbert Rd - Real Estate Lifestyles, LLC**  
Storefront Retail - Gilbert Submarket  
Gilbert, AZ 85234



|        |        |       |
|--------|--------|-------|
| 1,488  | 0.1    | 1957  |
| SF GLA | AC Lot | Built |

## AVAILABLE SPACES

No Spaces Available.

# Space Availability with Photo Report



**224 N Gilbert Rd**  
Storefront Retail - Gilbert Submarket  
Gilbert, AZ 85233

**4,349**  
SF GLA



## AVAILABLE SPACES

---

No Spaces Available.

# Space Availability with Photo Report



**225 N Gilbert Rd - Flashback Antiques**  
Storefront Retail - Gilbert Submarket  
Gilbert, AZ 85234



|        |        |       |
|--------|--------|-------|
| 4,500  | 0.2    | 1930  |
| SF GLA | AC Lot | Built |

## AVAILABLE SPACES

No Spaces Available.

## BUILDING NOTES

Property Description: TWO RETAIL BUILDINGS

# Space Availability with Photo Report



**227-231 N Gilbert Rd - All State Insurance**  
Freestanding Retail - Gilbert Submarket  
Gilbert, AZ 85234



|        |        |       |
|--------|--------|-------|
| 2,016  | 0.19   | 1940  |
| SF GLA | AC Lot | Built |

## AVAILABLE SPACES

No Spaces Available.



# Space Availability with Photo Report



**228 N Gilbert Rd**  
Restaurant - Gilbert Submarket  
Gilbert, AZ 85234



|        |        |       |
|--------|--------|-------|
| 2,321  | 0.1    | 1920  |
| SF GLA | AC Lot | Built |

## AVAILABLE SPACES

No Spaces Available.

## AMENITIES

- Restaurant

# Space Availability with Photo Report



**230 N Gilbert Rd - Liberty Market**  
Freestanding Retail - Gilbert Submarket  
Gilbert, AZ 85234



|        |        |               |
|--------|--------|---------------|
| 5,075  | 0.19   | 1930 / 2008   |
| SF GLA | AC Lot | Built / Renov |

## AVAILABLE SPACES

No Spaces Available.

## BUILDING NOTES

Purchased back on 1-11-2006 per recorded Affidavit 2006-048602  
Built in 1930 and renovated in 2008. Opened 10-14-2008 for business.

# Space Availability with Photo Report



**301 N Gilbert Rd - Joe's Real BBQ**  
Freestanding Retail - Gilbert Submarket  
Gilbert, AZ 85234



|        |        |               |
|--------|--------|---------------|
| 4,900  | 0.59   | 1961 / 1989   |
| SF GLA | AC Lot | Built / Renov |

## AVAILABLE SPACES

No Spaces Available.

## BUILDING NOTES

Property Description: RETAIL BUILDING

Property Use Description: Free Standing Retail Building

# Space Availability with Photo Report



**302 N Gilbert Rd**  
N Gilbert Rd  
Restaurant - Gilbert Submarket  
Gilbert, AZ 85234



|        |        |       |
|--------|--------|-------|
| 6,196  | 0.78   | 1998  |
| SF GLA | AC Lot | Built |

## AVAILABLE SPACES

No Spaces Available.

## AMENITIES

- Restaurant

## BUILDING NOTES

This is a fully equipped restaurant with a patio seating area, state of the art audio/visual system included, located in the heart of historic downtown Gilbert.

# Space Availability with Photo Report



**309 N Gilbert Rd**  
Retail - Gilbert Submarket  
Gilbert, AZ 85234



|              |             |
|--------------|-------------|
| <b>1,076</b> | <b>1950</b> |
| SF GLA       | Built       |

## AVAILABLE SPACES

---

No Spaces Available.

# Space Availability with Photo Report



**310 N Gilbert Rd - Snooze**  
Restaurant - Gilbert Submarket  
Gilbert, AZ 85234



4,200  
SF GLA

2015  
Built

## AVAILABLE SPACES

---

No Spaces Available.

# Space Availability with Photo Report



**312 N Gilbert Rd - The Porch**  
Restaurant - Gilbert Submarket  
Gilbert, AZ 85234



|        |        |       |
|--------|--------|-------|
| 4,300  | 0.2    | 2021  |
| SF GLA | AC Lot | Built |

AVAILABLE SPACES

No Spaces Available.

# Space Availability with Photo Report



**313 N Gilbert Rd**  
Freestanding Retail - Gilbert Submarket  
Gilbert, AZ 85234



|        |        |       |
|--------|--------|-------|
| 3,829  | 0.2    | 1964  |
| SF GLA | AC Lot | Built |

## AVAILABLE SPACES

---

No Spaces Available.

## BUILDING NOTES

---

This is a freestanding retail building that is located in the heart of downtown Gilbert.



# Space Availability with Photo Report



**323 N Gilbert Rd - Dierks Bentley's Whiskey Row**  
Restaurant - Gilbert Submarket  
Gilbert, AZ 85234



|        |        |       |
|--------|--------|-------|
| 13,341 | 0.39   | 2017  |
| SF GLA | AC Lot | Built |

## AVAILABLE SPACES

No Spaces Available.

## BUILDING NOTES

APN: 304-16-837

# Space Availability with Photo Report



**325 N Gilbert Rd**  
Retail - Gilbert Submarket  
Gilbert, AZ 85234



|        |        |       |
|--------|--------|-------|
| 1,439  | 0.39   | 1956  |
| SF GLA | AC Lot | Built |

## AVAILABLE SPACES

No Spaces Available.

# Space Availability with Photo Report



**328 N Gilbert Rd - Oregano's Pizza Bistro**  
Restaurant - Gilbert Submarket  
Gilbert, AZ 85234



|        |        |       |
|--------|--------|-------|
| 5,244  | 0.39   | 2006  |
| SF GLA | AC Lot | Built |

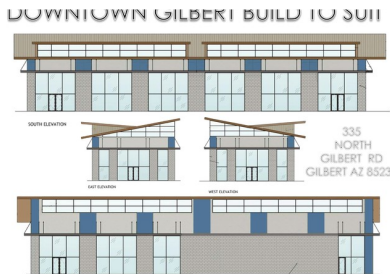
## AVAILABLE SPACES

No Spaces Available.

## AMENITIES

- |   |   |
|---|---|
| <ul style="list-style-type: none"><li>• Air Conditioning</li><li>• Pylon Sign</li><li>• Signage</li></ul> | <ul style="list-style-type: none"><li>• Corner Lot</li><li>• Restaurant</li><li>• Signalized Intersection</li></ul> |
|---|---|

# Space Availability with Photo Report



**335 N Gilbert Rd**  
NEC Gilbert Rd & E Vaughn Ave  
Freestanding Retail - Gilbert Submarket  
Gilbert, AZ 85234



|        |        |       |
|--------|--------|-------|
| 11,118 | 0.42   | 2018  |
| SF GLA | AC Lot | Built |

## AVAILABLE SPACES

No Spaces Available.

# Space Availability with Photo Report



**335 N Gilbert Rd - Gilbert Heritage Square**  
NEC Gilbert Rd & Vaughn Ave  
Land - Chandler Submarket  
Gilbert, AZ 85234



0.42  
AC Lot

## AVAILABLE SPACES

No Spaces Available.

# Space Availability with Photo Report



**335 N Gilbert Rd - Gilbert Heritage Square**  
NEC Gilbert Rd & Vaughn Ave  
Restaurant - Gilbert Submarket  
Gilbert, AZ 85234



|        |        |       |
|--------|--------|-------|
| 3,000  | 0.42   | 1940  |
| SF GLA | AC Lot | Built |

## AVAILABLE SPACES

No Spaces Available.

## AMENITIES

- Fenced Lot

## BUILDING NOTES

The building consists of 1,500 SF of evap cooled shop space constructed of block and concrete and a 1,500 SF storage shed. It has excellent fenced yard space. It is a prime property for future development. It offers excellent street visibility. The site is located in the Gilbert Heritage District and has access from Gilbert and Vaughn.

# Space Availability with Photo Report



**343 N Gilbert Rd - Heritage Animal Hospital**  
Office - Chandler Submarket  
Gilbert, AZ 85234



|        |        |       |
|--------|--------|-------|
| 2,400  | 0.22   | 1978  |
| SF RBA | AC Lot | Built |

## AVAILABLE SPACES

No Spaces Available.

## BUILDING NOTES

This property has a great Downtown Gilbert location and is across from Gonzo's Restaurant. The property has a tenant that has occupied the building for the past 12 years.

# Space Availability with Photo Report



**344 N Gilbert Rd - Bldg 1**  
Heritage Marketplace  
Restaurant (Neighborhood Center) - Gilbert Submarket  
Gilbert, AZ 85234



|        |        |       |
|--------|--------|-------|
| 4,035  | 1.03   | 2014  |
| SF GLA | AC Lot | Built |

## AVAILABLE SPACES

No Spaces Available.

## AMENITIES

- Signalized Intersection

## BUILDING NOTES

Grand opening scheduled for October 27, 2014.



# Space Availability with Photo Report



**366 N Gilbert Rd - Bldg 2**  
Heritage Marketplace  
Storefront Retail/Office (Neighborhood Center) - Gilbert Submarket  
Gilbert, AZ 85234



**21,752**  
SF GLA

**2014**  
Built

## AVAILABLE SPACES

No Spaces Available.

## AMENITIES

- Bus Line

## BUILDING NOTES

Heritage Marketplace is located in the Heritage District of Gilbert Approximately 60,800 square feet of total buildings, situated on 3.93 acres. Prime retail space fronting Gilbert Road will be approximately 12,000 for select retail and restaurant operators.

Heritage Marketplace is a uniquely placed family friendly, pedestrian oriented mixed-use development conveniently located on Gilbert Road, north of Elliot Road, and 2 miles south of US 60 Superstition Freeway.

# Space Availability with Photo Report



**383 N Gilbert Rd**  
Restaurant - Gilbert Submarket  
Gilbert, AZ 85234



|              |             |
|--------------|-------------|
| <b>5,000</b> | <b>2019</b> |
| SF GLA       | Built       |

## AVAILABLE SPACES

---

No Spaces Available.

# Space Availability with Photo Report



**388 N Gilbert Rd - Bldg 3**  
Heritage Marketplace  
Restaurant (Neighborhood Center) - Gilbert Submarket  
Gilbert, AZ 85234



|        |        |       |
|--------|--------|-------|
| 4,500  | 1.03   | 2014  |
| SF GLA | AC Lot | Built |

## AVAILABLE SPACES

No Spaces Available.

## AMENITIES

- Bus Line

# Space Availability with Photo Report



**415 N Gilbert Rd**  
Schools - Chandler Submarket  
Gilbert, AZ 85234



|        |        |               |
|--------|--------|---------------|
| 25,439 | 3.35   | 1986 / 2002   |
| SF GBA | AC Lot | Built / Renov |

## AVAILABLE SPACES

No Spaces Available.

# Space Availability with Photo Report



**437 N Gilbert Rd - Dairy Queen**  
Fast Food - Gilbert Submarket  
Gilbert, AZ 85234



|        |        |       |
|--------|--------|-------|
| 1,800  | 0.5    | 1977  |
| SF GLA | AC Lot | Built |

## AVAILABLE SPACES

No Spaces Available.

## BUILDING NOTES

Property Description: FAST FOOD RESTAURANT

# Space Availability with Photo Report



**450 N Gilbert Rd - Burger King**  
Fast Food - Gilbert Submarket  
Gilbert, AZ 85234



|        |        |       |
|--------|--------|-------|
| 2,726  | 0.8    | 1988  |
| SF GLA | AC Lot | Built |

## AVAILABLE SPACES

No Spaces Available.

## BUILDING NOTES

7/14/00: NexGen LLC purchased this building from G & J Rodriguez. Rein & Grossoehme represented both parties

# Space Availability with Photo Report



**459 N Gilbert Rd - Gilbert Commerce Center - Bldg B**  
Gilbert Commerce Center  
Office - Chandler Submarket  
Gilbert, AZ 85234



|        |        |       |
|--------|--------|-------|
| 18,573 | 0.92   | 1985  |
| SF RBA | AC Lot | Built |

## AVAILABLE SPACES

No Spaces Available.

## BUILDING NOTES

The Gilbert Commerce Center is composed of three buildings. Located in the Town of Gilbert, the #1 city in Arizona for business expansion. (Expansion Magazine) Less than two miles south of the Superstition Freeway (Rt. 60) and situated on 8.3 acres in a park-like setting. Excellent residential/commercial growth area.

# Space Availability with Photo Report



**459 N Gilbert Rd - Dutch Bros**  
Storefront Retail/Office - Gilbert Submarket  
Gilbert, AZ 85234



|        |        |               |
|--------|--------|---------------|
| 3,000  | 0.67   | 1986 / 2000   |
| SF GLA | AC Lot | Built / Renov |

## AVAILABLE SPACES

No Spaces Available.

## AMENITIES

- |   |  |
|---|--|
| <ul style="list-style-type: none"><li>• Air Conditioning</li><li>• Drive Thru</li></ul> | <ul style="list-style-type: none"><li>• Corner Lot</li><li>• Signage</li></ul> |
|---|--|

## BUILDING NOTES

Property Description: AUTO REPAIR/RETAIL BUILDING



# Space Availability with Photo Report



**251 W Juniper Ave**  
Freestanding Retail - Gilbert Submarket  
Gilbert, AZ 85233



|              |             |             |
|--------------|-------------|-------------|
| <b>5,997</b> | <b>0.79</b> | <b>1982</b> |
| SF GLA       | AC Lot      | Built       |

## AVAILABLE SPACES

---

No Spaces Available.

# Space Availability with Photo Report



**101 N Oak St - Gilbert 4**  
Apartments - Downtown Gilbert Submarket  
Gilbert, AZ 85233



|        |        |       |
|--------|--------|-------|
| 2,200  | 0.21   | 1982  |
| SF GBA | AC Lot | Built |

## AVAILABLE SPACES

---

No Spaces Available.

# Space Availability with Photo Report



**170 N Oak St - Page Commons 55+**  
Apartments - Downtown Gilbert Submarket  
Gilbert, AZ 85233



|               |             |             |
|---------------|-------------|-------------|
| <b>76,000</b> | <b>3.36</b> | <b>2004</b> |
| SF GBA        | AC Lot      | Built       |

## AVAILABLE SPACES

No Spaces Available.

## AMENITIES

### Unit Amenities

- |   |   |
|---|---|
| <ul style="list-style-type: none"><li>• Air Conditioning</li><li>• Heating</li><li>• Refrigerator</li></ul> | <ul style="list-style-type: none"><li>• Balcony</li><li>• Range</li><li>• Wheelchair Accessible (Rooms)</li></ul> |
|---|---|

### Site Amenities

- |  |   |
|--|---|
| <ul style="list-style-type: none"><li>• Business Center</li><li>• Gameroom</li></ul> | <ul style="list-style-type: none"><li>• Fitness Center</li><li>• Playground</li></ul> |
|--|---|

## BUILDING NOTES

The bed-bath mix, unit counts and sizes are estimated per property management.

# Space Availability with Photo Report



**301 N Oak St - Gilbert Apartments**  
Apartments - Downtown Gilbert Submarket  
Gilbert, AZ 85233



|        |        |       |
|--------|--------|-------|
| 20,104 | 1.3    | 1958  |
| SF GBA | AC Lot | Built |

## AVAILABLE SPACES

No Spaces Available.

## BUILDING NOTES

Property Description: 28-UNIT REHAB APARTMENT COMPLEX

# Space Availability with Photo Report



**50 W Page Ave**  
Retail - Gilbert Submarket  
Gilbert, AZ 85233



|              |             |             |
|--------------|-------------|-------------|
| <b>7,258</b> | <b>0.78</b> | <b>2003</b> |
| SF GLA       | AC Lot      | Built       |

## AVAILABLE SPACES

---

No Spaces Available.

# Space Availability with Photo Report



**229 N Palm St**  
Apartments - Downtown Gilbert Submarket  
Gilbert, AZ 85234



|              |             |             |
|--------------|-------------|-------------|
| <b>5,000</b> | <b>0.52</b> | <b>1958</b> |
| SF GBA       | AC Lot      | Built       |

## AVAILABLE SPACES

---

No Spaces Available.

# Space Availability with Photo Report



**38 Vaughn - Vaughn Avenue Lot**  
Land - Chandler Submarket  
Gilbert, AZ 85234



**0.16**  
AC Lot

## AVAILABLE SPACES

---

No Spaces Available.

# Space Availability with Photo Report



**139-147 Vaughn - Heritage District Land**  
Land - Chandler Submarket  
Gilbert, AZ 85233

|             |               |
|-------------|---------------|
| <b>0.53</b> | <b>23,087</b> |
| AC Lot      | SF For Lease  |

## AVAILABLE SPACES

---

No Spaces Available.



# Space Availability with Photo Report



**36-150 E Vaughn Ave - The Heritage**  
Apartments - Downtown Gilbert Submarket  
Gilbert, AZ 85234



|        |        |       |
|--------|--------|-------|
| 49,350 | 2.88   | 2005  |
| SF GBA | AC Lot | Built |

## AVAILABLE SPACES

No Spaces Available.

## AMENITIES

### Unit Amenities

- Air Conditioning
- Ceiling Fans
- Hardwood Floors
- High Speed Internet Access
- Refrigerator
- Views

- Cable Ready
- Dishwasher
- Heating
- Microwave
- Satellite TV
- Washer/Dryer

### Site Amenities

- Grill
- Picnic Area

## BUILDING NOTES

The bed-bath mix, unit counts, and sizes are estimated per property management.

# Space Availability with Photo Report



**124 E Vaughn Ave - Langley Heritage District**  
Land - Chandler Submarket  
Gilbert, AZ 85234



**2.55**  
AC Lot

## AVAILABLE SPACES

---

No Spaces Available.

# Space Availability with Photo Report



**60 W Vaughn Ave - Phase II Bldg 4**  
Heritage Marketplace  
Storefront Retail/Office (Neighborhood Center) - Gilbert Submarket  
Gilbert, AZ 85234



|        |        |       |
|--------|--------|-------|
| 9,600  | 1.18   | 2016  |
| SF GLA | AC Lot | Built |

## AVAILABLE SPACES

No Spaces Available.

## AMENITIES

- Air Conditioning
- Restaurant

## BUILDING NOTES

Heritage Marketplace is located in the Heritage District of Gilbert Approximately 60,800 square feet of total buildings, situated on 3.93 acres. Prime retail space fronting Gilbert Road will be approximately 12,000 for select retail and restaurant operators.

Heritage Marketplace is a uniquely placed family friendly, pedestrian oriented mixed-use development conveniently located on Gilbert Road, north of Elliot Road, and 2 miles south of US 60 Superstition Freeway.

# Space Availability with Photo Report



**92 W Vaughn Ave - University Building**  
Schools - Chandler Submarket  
Gilbert, AZ 85233



|        |        |
|--------|--------|
| 90,920 | 2.27   |
| SF GBA | AC Lot |

## AVAILABLE SPACES

No Spaces Available.

# Space Availability with Photo Report



**147 W Vaughn Ave**  
Veterinarian/Kennel - Gilbert Submarket  
Gilbert, AZ 85233



|              |             |             |
|--------------|-------------|-------------|
| <b>3,338</b> | <b>0.57</b> | <b>1971</b> |
| SF GLA       | AC Lot      | Built       |

## AVAILABLE SPACES

---

No Spaces Available.

# Space Availability with Photo Report



**22 W Washington Ave**  
Religious Facility - Chandler Submarket  
Gilbert, AZ 85233



|        |        |       |
|--------|--------|-------|
| 20,988 | 1.35   | 1954  |
| SF GBA | AC Lot | Built |

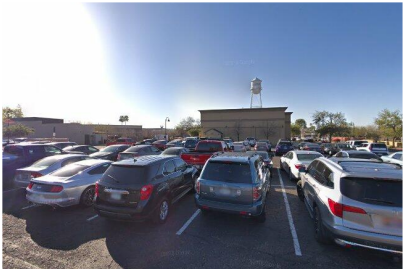
## AVAILABLE SPACES

No Spaces Available.

## BUILDING NOTES

Property Description: CHURCH

# Space Availability with Photo Report



**N Ash St**  
Parking Lot  
Land - Chandler Submarket  
Gilbert, AZ 85233

0.57  
AC Lot

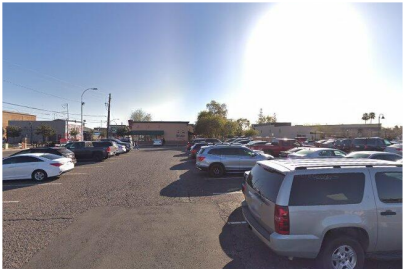


AVAILABLE SPACES

---

No Spaces Available.

# Space Availability with Photo Report



**300 N Ash St - The Bungalows on Ash**  
Apartments - Downtown Gilbert Submarket  
Gilbert, AZ 85233



|         |        |       |
|---------|--------|-------|
| 132,000 | 1.73   | 2024  |
| SF GBA  | AC Lot | Built |

## AVAILABLE SPACES

No Spaces Available.

## AMENITIES

- |  |   |
|--|---|
| <ul style="list-style-type: none"><li>• Air Conditioning</li><li>• Kitchen</li><li>• Range</li></ul> | <ul style="list-style-type: none"><li>• Heating</li><li>• Oven</li><li>• Refrigerator</li></ul> |
|--|---|



# Space Availability with Photo Report



**139 N Elm St**  
Apartments - Downtown Gilbert Submarket  
Gilbert, AZ 85234



|        |        |       |
|--------|--------|-------|
| 2,880  | 0.21   | 1983  |
| SF GBA | AC Lot | Built |

## AVAILABLE SPACES

No Spaces Available.

## BUILDING NOTES

Added property with true owner and contact. Estimate MMC per costar Accessor.

# Space Availability with Photo Report



**205 N Elm St**  
Apartments - Downtown Gilbert Submarket  
Gilbert, AZ 85234



|        |        |       |
|--------|--------|-------|
| 3,224  | 0.19   | 1972  |
| SF GBA | AC Lot | Built |

## AVAILABLE SPACES

---

No Spaces Available.

# Space Availability with Photo Report



**209 N Elm St**  
Apartments - Downtown Gilbert Submarket  
Gilbert, AZ 85234



|              |             |             |
|--------------|-------------|-------------|
| <b>2,233</b> | <b>0.19</b> | <b>1965</b> |
| SF GBA       | AC Lot      | Built       |

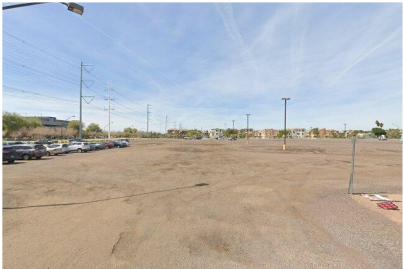
## AVAILABLE SPACES

No Spaces Available.

## BUILDING NOTES

Added property with true owner and contact. Estimate MMC per costar Accessor.

# Space Availability with Photo Report



**N Gilbert Rd - Vacant Land**  
Land - Chandler Submarket  
Gilbert, AZ 85234



**11.1**  
AC Lot

**AVAILABLE SPACES**

---

No Spaces Available.

# Space Availability with Photo Report



**N Gilbert Rd - Vacant Land**  
Land - Chandler Submarket  
Gilbert, AZ 85234



**6.1**  
AC Lot

## AVAILABLE SPACES

---

No Spaces Available.

# Space Availability with Photo Report



**15 N Gilbert Rd**  
Freestanding Retail - Gilbert Submarket  
Gilbert, AZ 85234



|        |        |       |
|--------|--------|-------|
| 4,727  | 0.54   | 2004  |
| SF GLA | AC Lot | Built |

## AVAILABLE SPACES

No Spaces Available.

# Space Availability with Photo Report



**100 N Gilbert Rd**  
Land - Chandler Submarket  
Gilbert, AZ 85234

**0.14**  
AC Lot

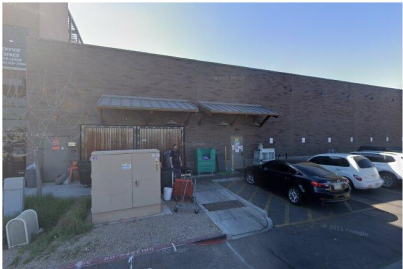


**AVAILABLE SPACES**

---

No Spaces Available.

# Space Availability with Photo Report



**325 N Gilbert Rd**  
Heritage Center  
Land - Chandler Submarket  
Gilbert, AZ 85234

**0.59**  
AC Lot



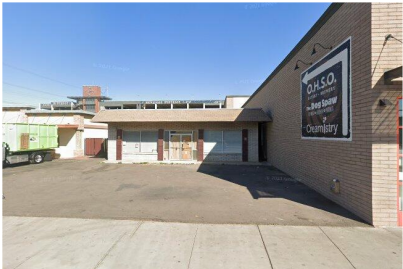
## AVAILABLE SPACES

---

No Spaces Available.



# Space Availability with Photo Report



**339 N Gilbert Rd**  
Retail - Gilbert Submarket  
Gilbert, AZ 85234



|        |        |       |
|--------|--------|-------|
| 2,420  | 0.11   | 1977  |
| SF GLA | AC Lot | Built |

## AVAILABLE SPACES

No Spaces Available.

# Space Availability with Photo Report



**415 N Gilbert Rd - Bldg D**  
Gilbert Commerce Center  
Office - Chandler Submarket  
Gilbert, AZ 85234

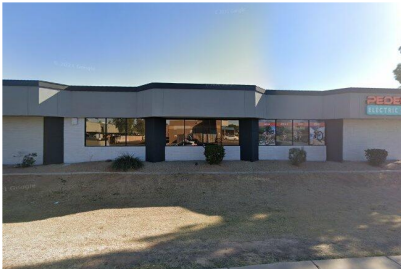


|        |        |       |
|--------|--------|-------|
| 25,439 | 3.35   | 1986  |
| SF RBA | AC Lot | Built |

## AVAILABLE SPACES

No Spaces Available.

# Space Availability with Photo Report



**459 N Gilbert Rd - Hard Corner, Standalone**  
Office - Chandler Submarket  
Gilbert, AZ 85234



2,640  
SF RBA

## AVAILABLE SPACES

---

No Spaces Available.

# Space Availability with Photo Report



**2 S Gilbert Rd - Volvo Cars Gilbert**  
Land - Chandler Submarket  
Gilbert, AZ 85297



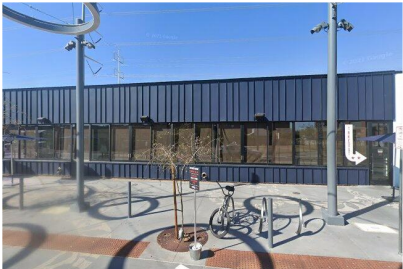
**5.01**  
AC Lot

## AVAILABLE SPACES

---

No Spaces Available.

# Space Availability with Photo Report



**16 E Hearne Way**  
Land - Chandler Submarket  
Gilbert, AZ 85234

**1.2**  
AC Lot



## AVAILABLE SPACES

---

No Spaces Available.

# Space Availability with Photo Report



**161 E Lexington Ave**  
Apartments Condo - Downtown Gilbert Submarket  
Gilbert, AZ 85234



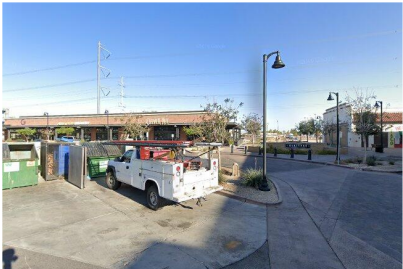
|               |             |
|---------------|-------------|
| <b>16,000</b> | <b>2022</b> |
| SF GBA        | Built       |

**AVAILABLE SPACES**

---

No Spaces Available.

# Space Availability with Photo Report



**20 W Vaughan Ave - Heritage Marketplace**  
Land - Chandler Submarket  
Gilbert, AZ 85233



**2.67**  
AC Lot

## AVAILABLE SPACES

---

No Spaces Available.

# Space Availability with Photo Report



**20 W Vaughan Ave - Lot D**  
Heritage Marketplace  
Land - Chandler Submarket  
Gilbert, AZ 85233



**0.37**  
AC Lot

## AVAILABLE SPACES

No Spaces Available.

## BUILDING NOTES

The subject property is Lot D, a build-to-suit pad, in Heritage Plaza, a unique Class A mixed-use development located on the northwest corner of Gilbert Road and Vaughan Avenue in Gilbert, AZ. Site amenities will include: building and monument signage, 3 office/retail build-to-suit pads and 3-story parking structure. Located in the heart of Gilbert's Heritage District adjacent to Gilbert's Power Line Park and Trail.